

# MONTHLY MEMBERSHIP PROGRESS REPORT

LOCATION TEXAS

District 2 X3

Results as of: 5/31/2022

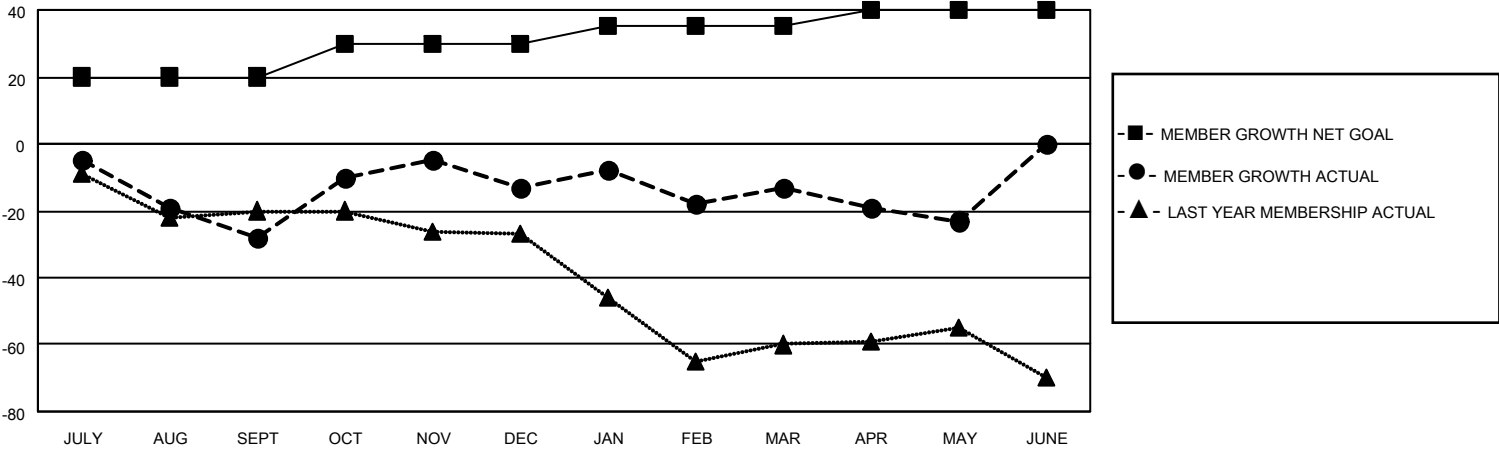
Clubs			
RESULTS FOR 2021-2022			
QUARTER	NEW CLUB GOAL	NEW CLUBS	DROPPED CLUBS
JULY/AUG/SEPT	0	0	1
OCT/NOV/DEC	0	0	0
JAN/FEB/MAR	1	0	0
APR/MAY/JUNE	1	0	0

Members			
RESULTS FOR 2021-2022			
QUARTER	MEMBER GROWTH NET GOAL	MEMBER GROWTH ACTUAL	DROPPED MEMBERS ACTUAL (including transfers)
JULY/AUG/SEPT	20	62	84
OCT/NOV/DEC	10	67	42
JAN/FEB/MAR	5	53	46
APR/MAY/JUNE	5	21	29

**GOALS AND ACTUAL NEW CLUBS CUMULATIVE**



**GOALS AND ACTUAL MEMBERS CUMULATIVE**



DROPPED CLUBS: 1	
<b>DROPPED MEMBERS</b>	
DECEASED	24
CLUB CANCELLED	15
OTHER	162
<b>TOTAL</b>	<b>201</b>

38 CLUBS OF 49 ADDED 1 OR MORE NEW MEMBERS

[CLICK HERE FOR CUMULATIVE MEMBERSHIP DATA](#)

<u>GENDER DISTRIBUTION</u>	
MALE	865 (64.07%)
FEMALE	485 (35.93%)
NON BINARY	0 (0.00%)
PREFER NOT TO ANSWER	0 (0.00%)
<b>TOTAL FAMILY UNIT MEMBERS</b>	<b>154</b>
<b>FAMILY MEMBERS PAYING HALF DUES</b>	<b>78</b>